

EVEREST CENTRIFUGAL BLOWERS

LET'S **GO** VALUE ENGINEERING



Outlet Upward (CX)



Outlet position can be changed (TB FMS PF)



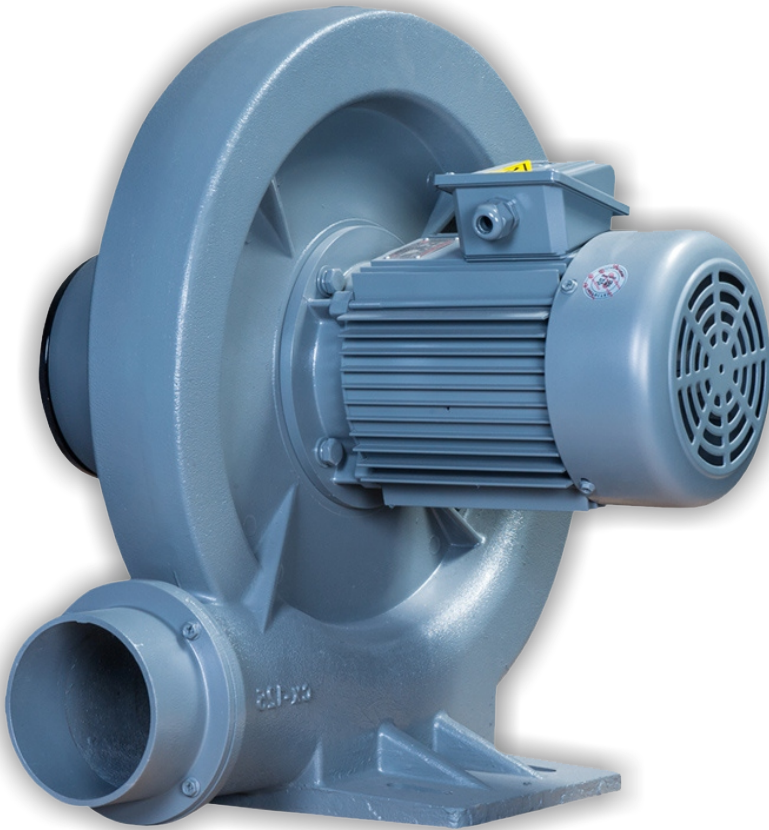
Motor position can be changed left to right (TB MS FMS PF)



200 degree temperatures resistance can be customized

Index

Company Profile	2
CX Series	3
TB Series	6
HTB Series	8
MS Series	12
FMS Series	14
PF Series	16



A History of Manufacturing Excellence

40
YEARS

Everest Blowers are European designed and engineered for exceptional quality and outstanding performance and are manufactured in state-of-the-art ISO 9001 quality system facilities around the world.

Discover the rugged quality, powerful performance and unwavering dependability that Everest Turbo brings to your application.

Company Profile

Innovative Engineering Solutions !!

EVEREST TURBO

Everest Group was established in 1980, with the manufacturing of Twin Lobe Rotary Air Blowers (Roots Blowers). Over the years the company has expanded its technology base, bringing a wide range of products. With its corporate office in New Delhi & two state of art manufacturing facilities in Bahadurgarh, Haryana, India, the company is ISO9001:2015 certified which attests its quality. Facilities include in house design, production, manufacturing, quality control, inspection and after sales service.

Sales are through a network of direct sales representatives, distributors and agents. Everest has a complete marketing infrastructure all over India. Inside sales people have years of application experience and are totally capable of helping you determine your best hardware solutions, if questions exist. We provide in-depth technical support both before and after the sale. This support is critical because our products are designed with the flexibility and dependability to provide years of service in cutting edge and demanding applications. A focus on innovative design and high quality machined parts has earned Everest a reputation for excellent workmanship amongst its users. For nearly four decades Everest has offered its customers quality, cost-effective machines necessary to meet the changing technology. Our commitment to total quality in both our products and services is the foundation upon which our future business is based.

Broad Product Line Serves Wide Variety of Applications: We know that performance of the OEM's design ultimately depends on the quality and dependability of its components. That's why so many manufacturers of Water Treatment Plants, Effluent Treatment Plants, Cement Plants, Aquiculture Farms, Chemical Plants, Paper Plants, Vacuum Plants and Systems, and Pneumatic Conveying Systems have entrusted their reputation to Everest. Our broad product line of Roots Blowers (Bi-lobe & Tri-lobe) (Air / Gas Duty), Mechanical Vacuum Boosters, Dry Screw Vacuum Pumps, Acoustic Hoods & Industrial Vacuum Systems consists of standard and custom models that fall into major product group. The company has recently introduced its Turbo Blowers Vertical wherein new product groups including Side Channel Blowers, Centrifugal Blowers, High Speed Centrifugal Blowers and Air Knife Systems and Turbo Blowers have been added with an idea to provide energy efficient low pressure air solutions to the global industry.

Engineering Expertise: As a company structured to serve the OEM's, we understand the critical requirements that each OEM application has in terms of power, space, noise, air flow, vibration, cost and more. With our standard models of Air Blowers and Vacuum Pumps, we're able, through our unique design and engineering expertise, to develop a completely new model, or modify an existing design. The result is a custom air blower or vacuum pump that meets the exact requirements of OEM application at the lowest possible cost.

Our Commitment To Quality – ISO 9001:2015:The hallmark of our commitment to quality is our International Standards Organisation (ISO) registration. This ensures that our OEM customers receive products of highest quality.

CX Series

Everest Centrifugal Blower (Medium Pressure Blower) EVEREST TURBO

CX-65



CX-75AB2



CX-125



CX-75SA



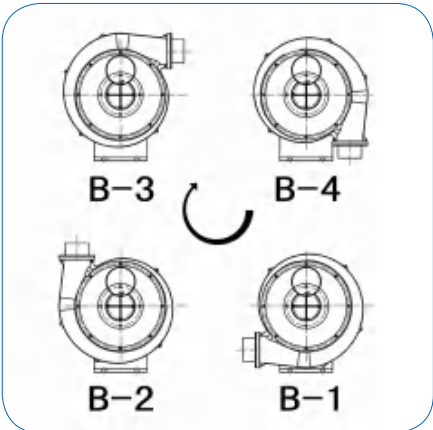
CX-100A



CX-150A



Orientation



CX-100 / CX-125A / CX-150A

The Housing can rotate 360° and the outlet can be adjusted in 8 directions.

CX Series

Everest Centrifugal Blower (Medium Pressure Blower)

EVEREST TURBO

Functional Features

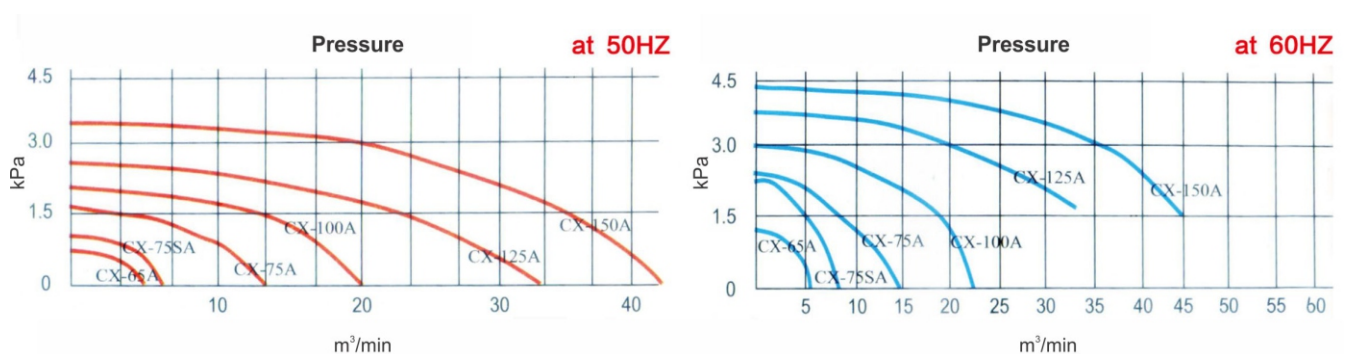
- Light Weight
- Big Volume
- Low Noise
- High Pressure
- Continuous Duty Operation
- Long Service Life
- Aerodynamic Blade Design
- High Air Volume Control Stability
- ADC-12 High Strength Aluminum Alloy



Technical Parameters

Type	Phase	Power (KW)	Voltage (V)	Current (A)	Vacuum/Pressure (max) (Kpa)	Air Flow (max)(m3/min)	In/Out (mm)	Noise Level (dB)	Weight (kg)
CX-65A	1~	0.2	220	1.5	0.7/1.1	4.5/5.3	IN 110	50/62	7
	3~		220/415	1.1/0.9			OUT 65		
CX-75SA	1~	0.4	220	2.5	1.1/1.6	7/8	IN 108	56/70	11
	3~		220/415	1.9/1.2			OUT 75		
CX-75A	1~	0.75	220	5	1.7/2.4	13/15	IN 125	64/80	14
	3~		220/415	3/2.0			OUT 100		
CX-100A	1~	1.5	220	9	2/3	20/23	IN 125	74/90	28
	3~		220/415	5.5/3.5			OUT 100		
CX-125A	3~	2.2	220/415	8/5	2.4/3.7	32/37	IN 252 OUT 125	76/95	38
CX150A	3~	3.7	220/415	13/7.5	3.2/4.4	46/53	IN 252 OUT 150	80/100	54

Performance Curve

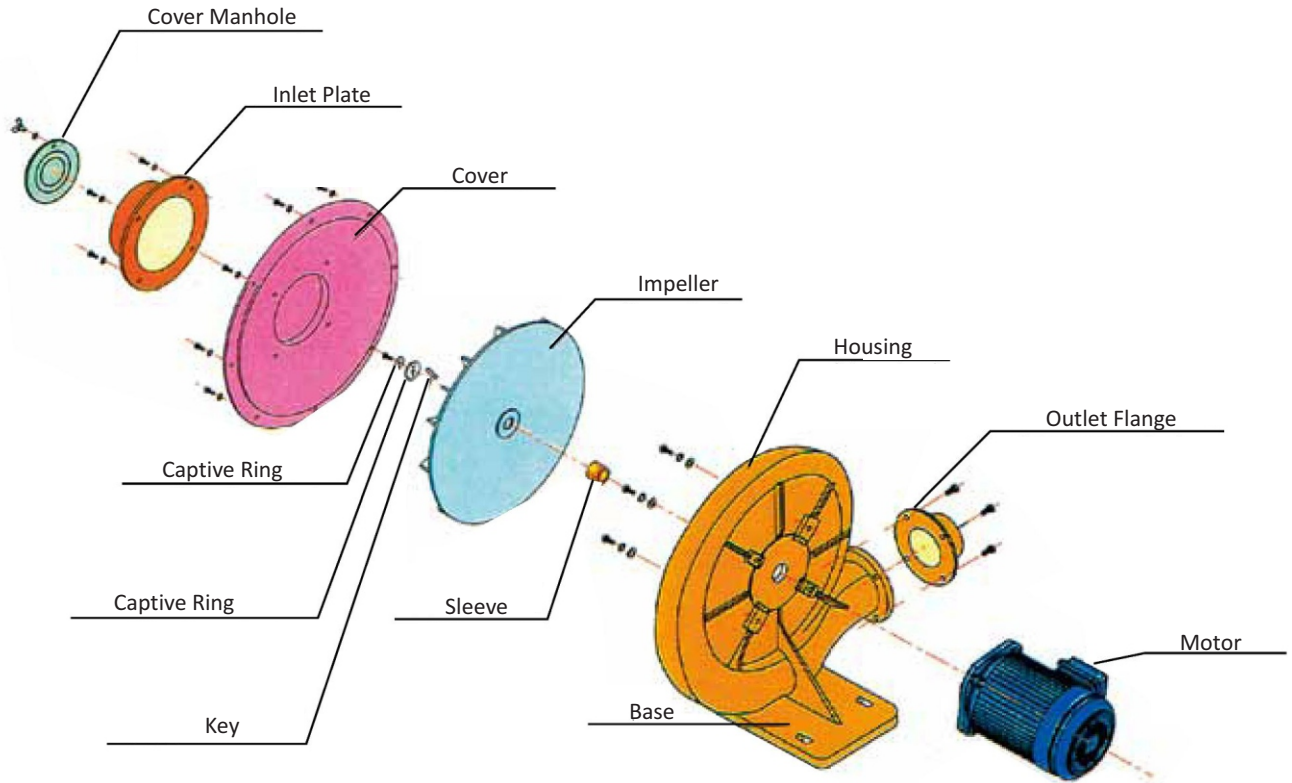


CX Series

Everest Centrifugal Blower (Medium Pressure Blower)

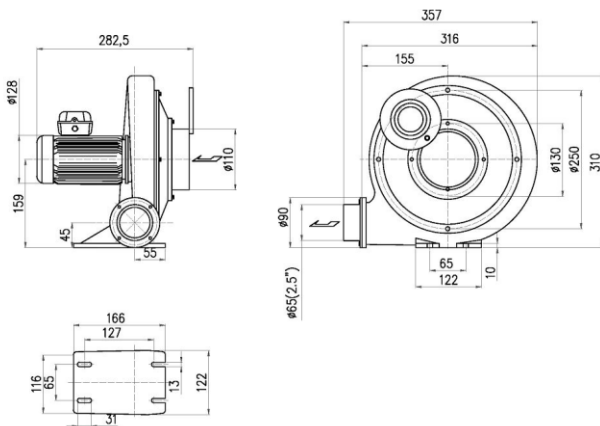
EVEREST TURBO

Chart

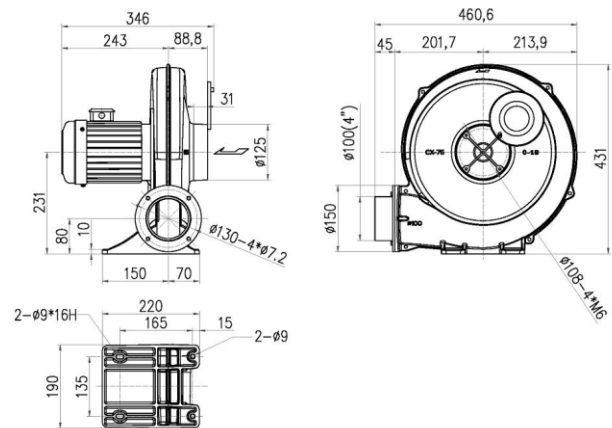


Dimensions

CX-65A



CX-75A



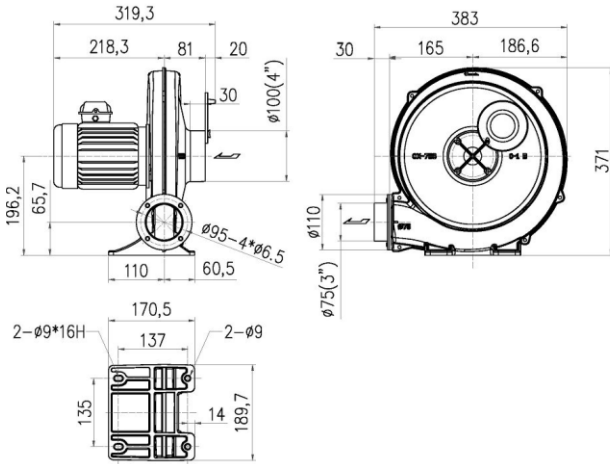
CX Series

Everest Centrifugal Blower (Medium Pressure Blower)

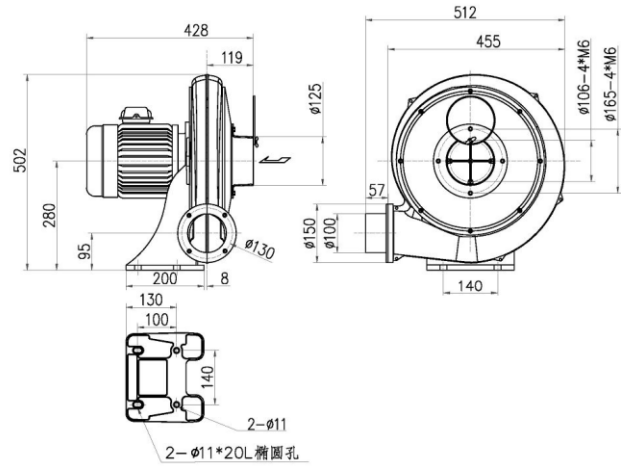
EVEREST TURBO

Dimensions

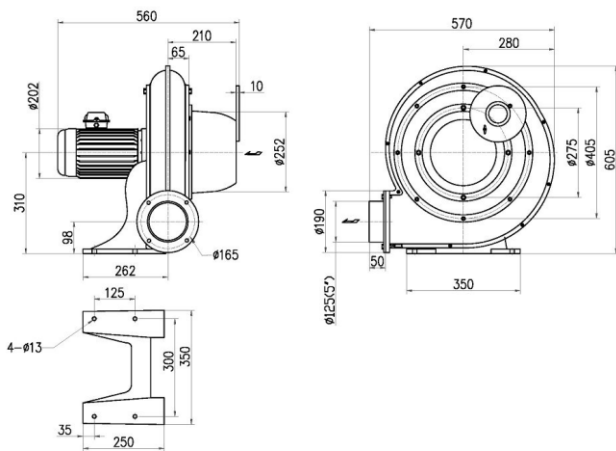
CX-75SA



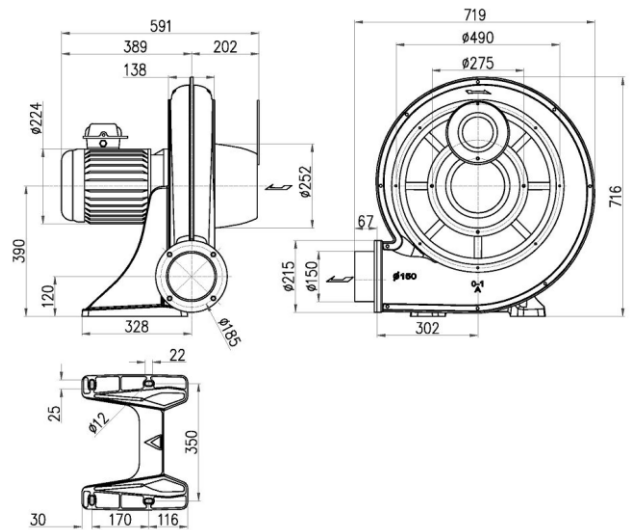
CX-100A



CX-125A



CX-150A



TB Series

Everest Centrifugal Blower (Medium Pressure Blower)

EVEREST TURBO

TB100-1H



TB100-2



TB125-3



TB150-7.5



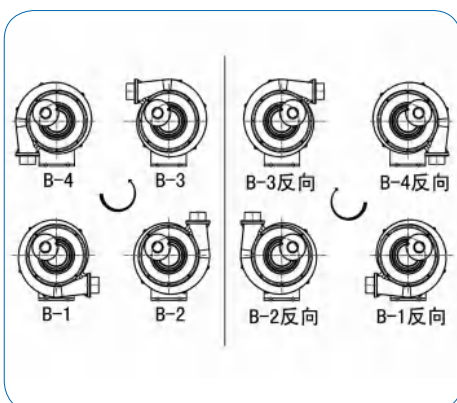
TB150-5



TB200



Orientation



TB Series Housing can be rotated 360°
The outlet can be adjusted in 8 directions & the motor can be mounted on left or right.

TB Series

Everest Centrifugal Blower (Medium Pressure Blower)

EVEREST TURBO

Functional Features

- Light Weight
- Big Volume
- Low Noise
- Medium Pressure
- Continuous Duty Operation
- Long Service Life
- Aerodynamic Blade Design
- High Air Volume Control Stability
- ADC-12 High Strength Aluminum Alloy
- Double Plate & Clip Impeller



Technical Parameters

50/60HZ

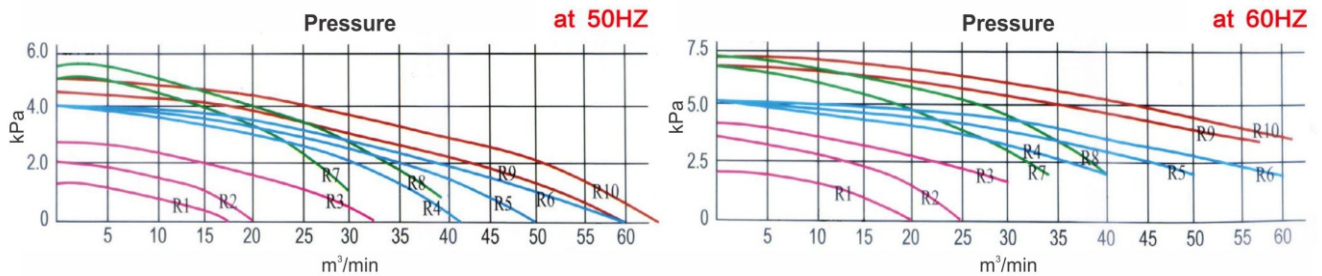
Type	Phase	Power (KW)	Voltage (V)	Current (A)	Vacuum/Pressure (max) (Kpa)	Air Flow (max)(m3/min)	In/Out (mm)	Noise Level (dB)	Weight (kg)
TB100-1	1~	0.75	220	5	1.3/2.1	18/22	IN 200	70/80	21
	3~		220/415	3/2.0			OUT 100		
TB100-2	1~	1.5	220	9	2/3	20/25	IN 200	70/85	28
	3~		220/415	5.5/3.5			OUT 100		
TB125-3	3~	2.2	220/415	8/5	2.4/3.6	33/39	IN 252 OUT 125	80/90	37
TB150-5	3~	3.7	220/415	13/7.5	3.8/5.3	48/53	IN 252 OUT 150	90/95	52
TB150-7.5	3~	5.5	220/415	19/11.5	4/5.3	50/65	IN 252 OUT 150	90/95	73
TB150-10	3~	7.5	220/415	26/15.5	4/5.3	60/75	IN 252 OUT 150	90/95	82
TB150L-10	3~	7.5	220/415	26/18	5/6.5	50/53	IN 252 OUT 150	90/100	82
TB200-15	3~	11	220/415	36/22	5/6.5	65/85	IN 315 OUT 200	95/110	117
TB200-20	3~	19	220/415	47/28	5/7	90/100	IN 315 OUT 200	95/100	125

TB Series

Everest Centrifugal Blower (Medium Pressure Blower)

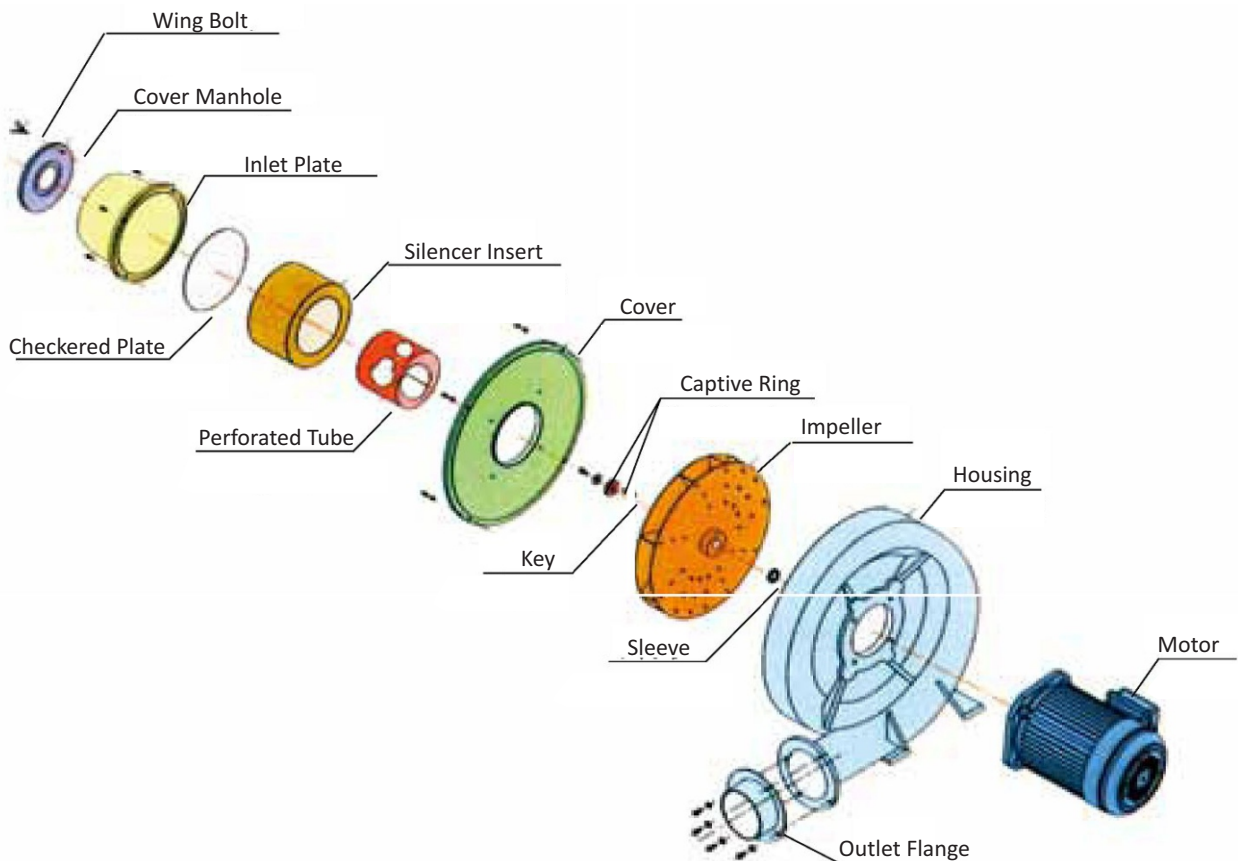
EVEREST TURBO

Performance curve



Item No.	Model No.	Item No.	Model No.	Item No.	Model No.	Item No.	Model No.
R1	TB100-1	R2	TB100-2	R3	TB125-3	R4	TB150-5
R5	TB150-7.5	R6	TB150-10	R8	TB150L-10	R9	TB200-15
R10	TB200-20						

Chart



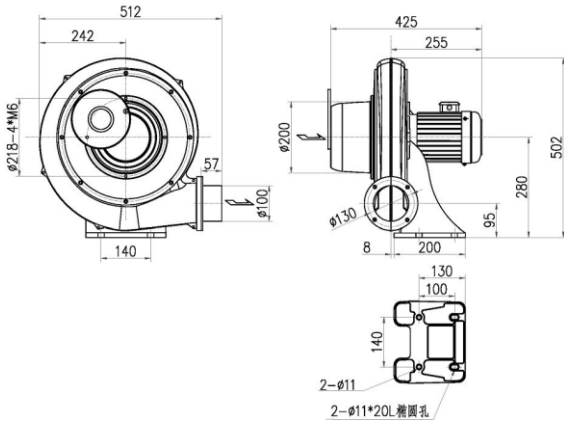
TB Series

Everest Centrifugal Blower (Medium Pressure Blower)

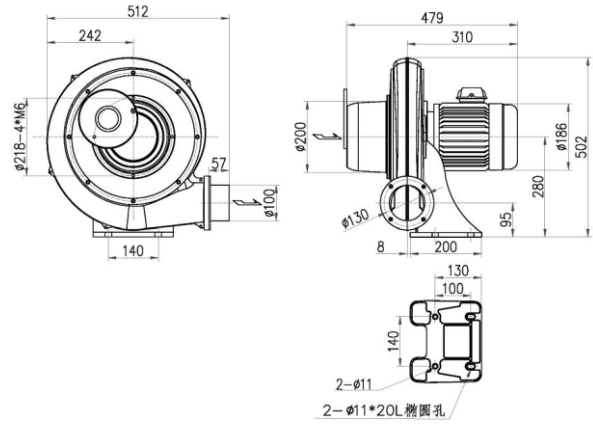
EVEREST TURBO

Dimensions

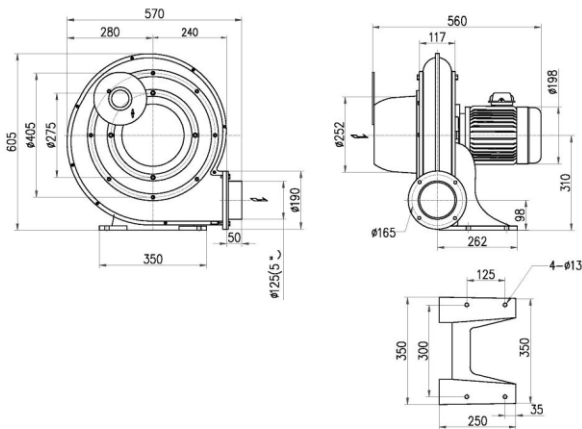
TB100-1



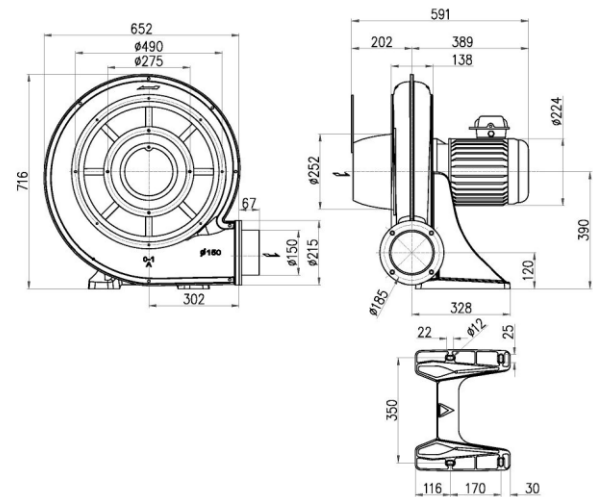
TB100-2



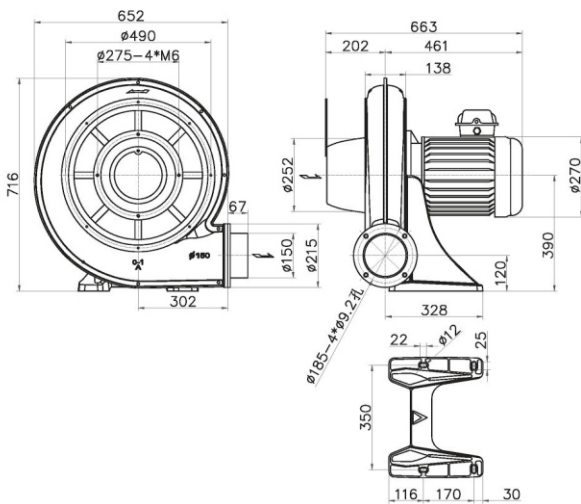
TB125-3



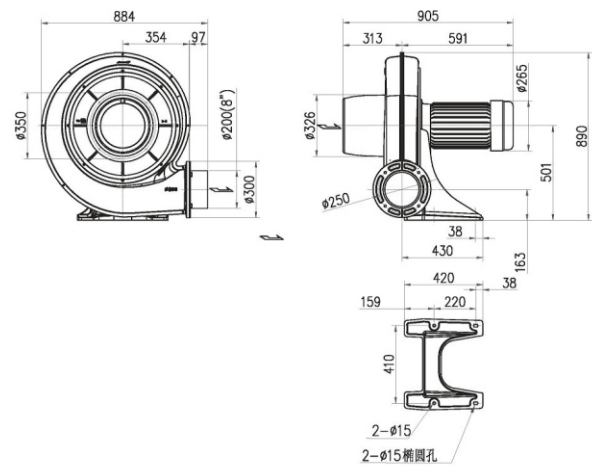
TB125-5



TB150-7.5



TB200-15



HTB Series

Everest Centrifugal Blower (Medium Pressure Blower)

EVEREST TURBO

HTB75



HTB102



HTB100-103



HTB100-203



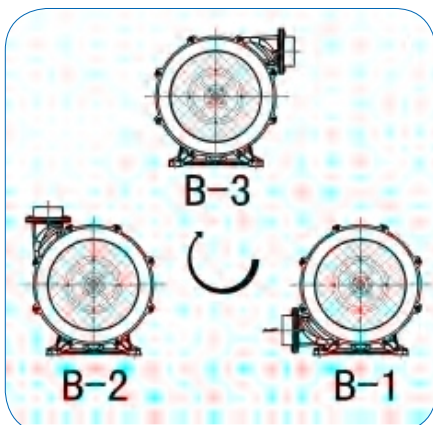
HTB125



HTB125-B2



Orientation



HTB Series Housing can be rotated 225° & the outlet direction can be adjusted in 6 directions.

HTB Series

Everest Centrifugal Blower (Medium Pressure Blower)

EVEREST TURBO

Functional Features

- Light Weight
- Big Volume
- Low Noise
- Medium Pressure
- Continuous Duty Operation
- Long Service Life
- Aerodynamic Blade Design
- High Air Volume Control Stability
- ADC-12 High Strength Aluminum Alloy
- Double Plate & Clip Impeller



Specifications

50/60HZ

Type	Phase	Power (KW)	Voltage (V)	Current (A)	Vacuum/Pressure (max) (Kpa)	Air Flow (max)(m3/min)	In/Out (mm)	Noise Level (dB)	Weight (kg)
HTB75-032	3~	0.4	220/415	1.9/1.2	2.1/2.6	6/7	75	53/65	17
HTB75-053	3~	0.4	220/415	1.9/1.2	2.9/3.8	6.5/7.5	75	55/68	19
HTB75-104	3~	0.75	220/415	3.1/2.0	3.7/5	6.5/8	75	56/70	24
HTB75-105	3~	0.75	220/415	3.1/2.0	4.2/6	6.8/8.5	75	56/70	28
HTB100-102	3~	0.75	220/415	3.1/2.0	3.4/4.5	11/13	100	60/74	26
HTB100-203	3~	1.5	220/415	5.5/3.5	5/7	11/14	100	61/76	36
HTB100-304	3~	2.2	220/415	8/5	6.5/9	12.5/16	100	63/78	42
HTB100-505	3~	3.7	220/415	1.3/7.5	7.9/11	12.8/16.5	100	64/80	56
HTB125-503	3~	3.7	220/415	13/7.5	5.8/7.9	19/23	125	70/85	57
HTB125-704	3~	5.5	220/415	19/11.5	7.5/10.5	20.24	125	70/88	81
HTB125-1005	3~	7.5	220/415	26/15.5	9/13	20/24	125	72/90	98
HTB200-1502	3~	11	220/415	36/22	7/9	52/65	200	86/109	150
HTB200-1503	3~	15	220/415	47/28	8/10	56/70	200	88/110	170
2HTB65-503	3~	3.7	220/415	13/7.5	12/16	11/13	G2 1/2	70/85	73
2HTB65-704	3~	5.5	220/415	19/11.5	15/21	12/14	G2 1/2	70/85	104
2HTB65-1005	3~	7.5	220/415	26/15.5	18/26	13/15	G2 1/2	70/85	118

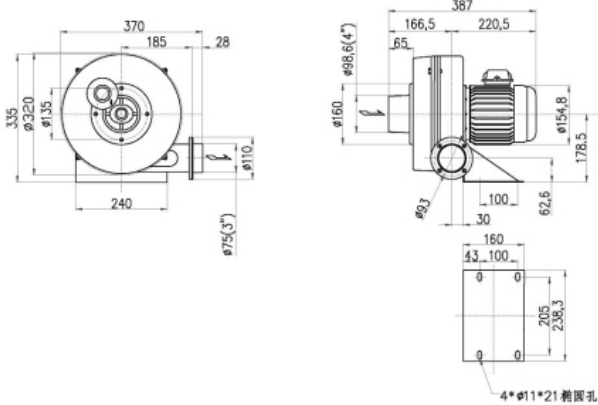
HTB Series

Everest Centrifugal Blower (Medium Pressure Blower)

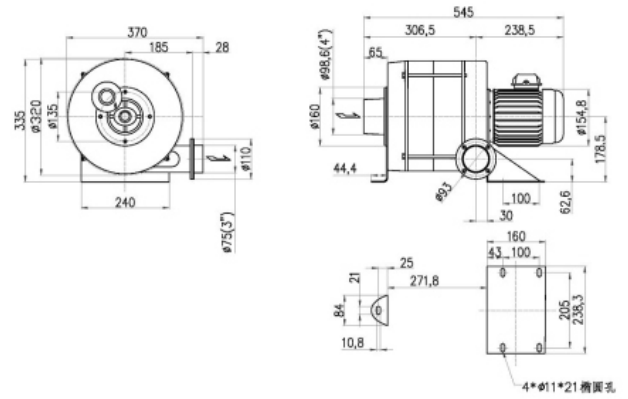
EVEREST TURBO

Dimensions

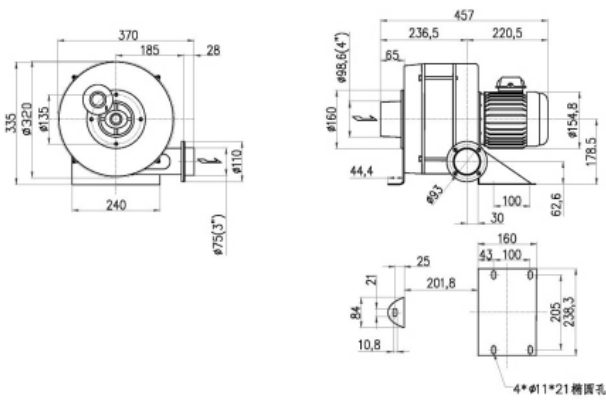
HTB75-032



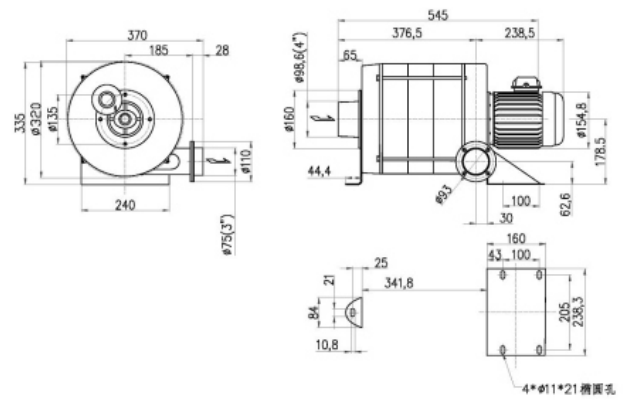
HTB75-104



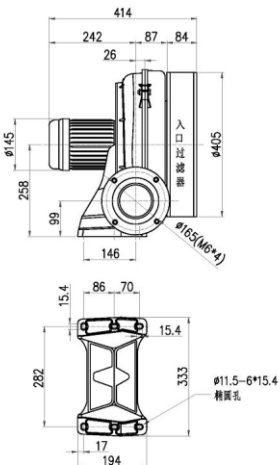
HTB75-053



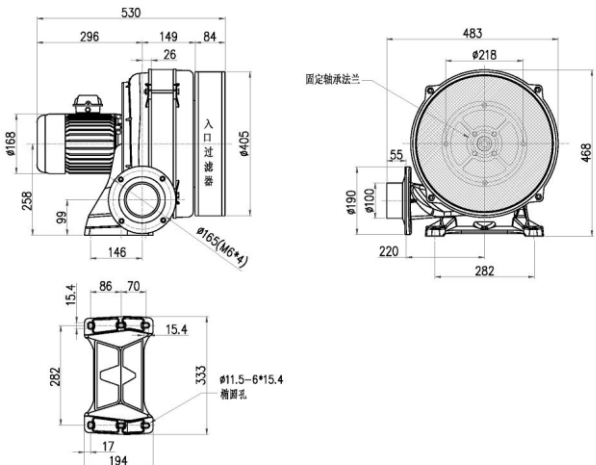
HTB75-105



HTB100-102



HTB100-203

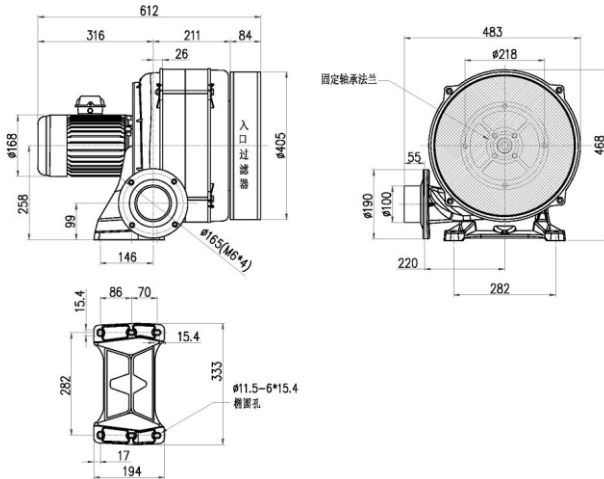


HTB Series

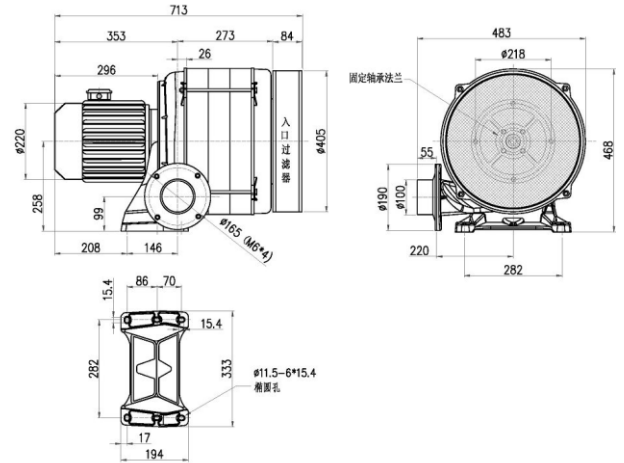
Everest Centrifugal Blower (Medium Pressure Blower)

EVEREST TURBO

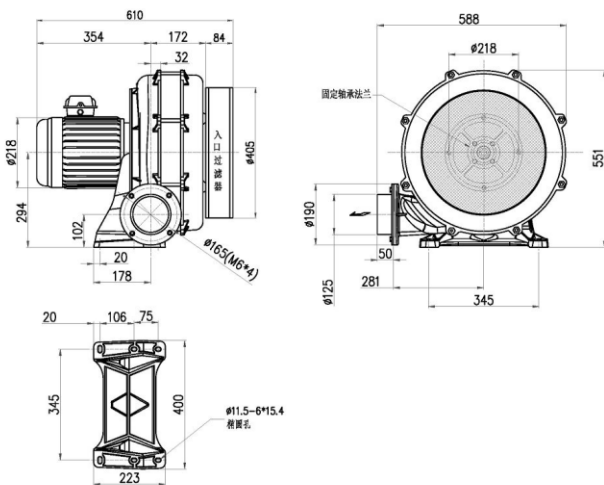
HTB100-304



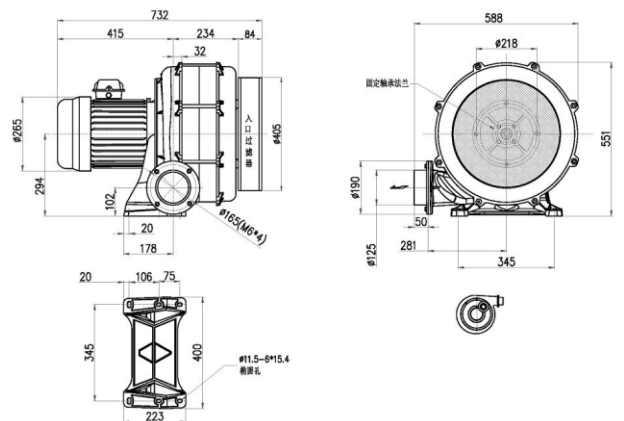
HTB100-505



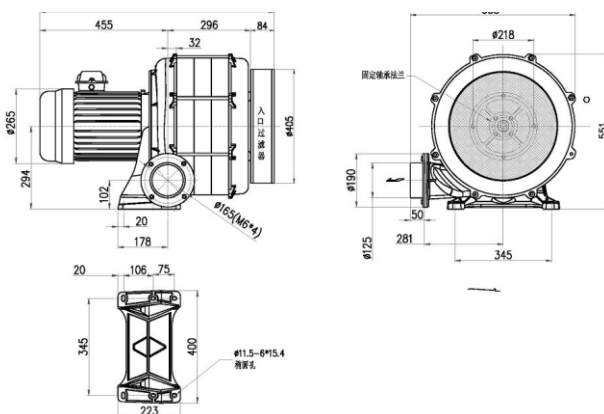
HTB100-503



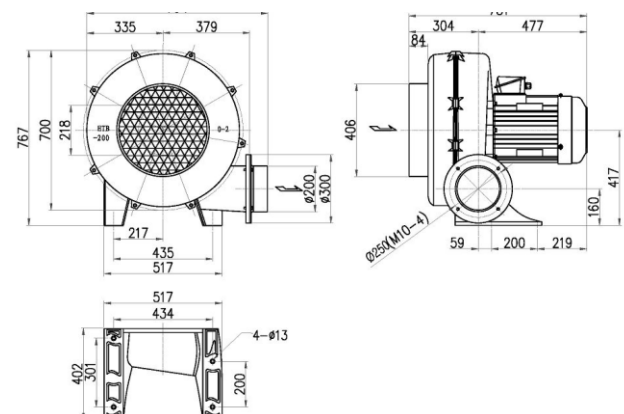
HTB100-704



HTB1125-1005



HTB200-Model

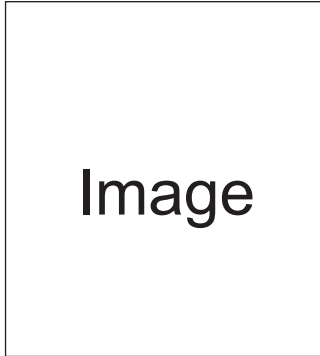


MS Series

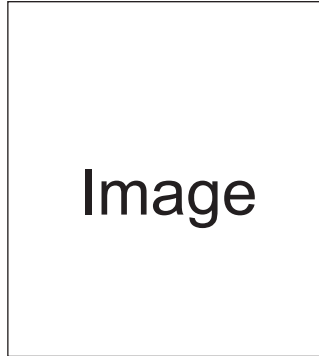
Everest Centrifugal Blower (Medium Pressure Blower)

EVEREST TURBO

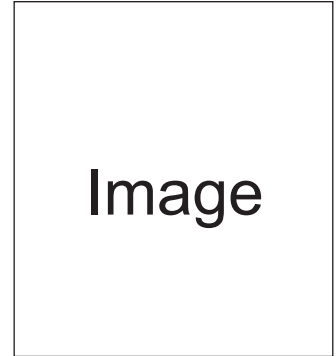
MS-202A



MS-405A



MS-751A



Functional Features

50/60HZ

- Light Weight
- Big Volume
- Low Noise
- Low Pressure
- Continuous Duty Operation
- Long Service Life
- Aerodynamic Blade Design
- High Air Volume Control Stability
- ADC-12 High Strength Aluminum Alloy
- Multi Vane Impeller



Specifications

50/60HZ

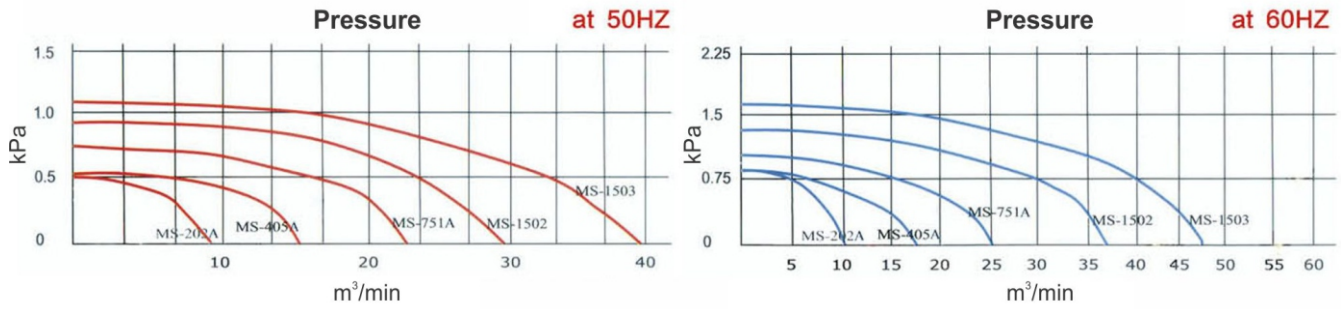
Type	Phase	Power (KW)	Voltage (V)	Current (A)	Vacuum/Pressure (max) (Kpa)	Air Flow (max)(m3/min)	In/Out (mm)	Noise Level (dB)	Wt. (kg)
MS-202A	1~	0.2	220	1.5	0.5/0.8	8/10	IN 125	60/65	8
	3~		200/415	1.1/0.9			OUT 95*100		
MS-405A	1~	0.4	220	2.5	0.6/0.8	15/17	IN 150	65/70	9
	3~		220/415	1.9/1.2			OUT 100*135		
MS-751A	1~	0.75	220	5	0.7/1	23/25	IN 200	70/75	13
	3~		220/415	3/1.9			OUT 135*160		
MS-1502	1~	1.5	220	9	0.9/1.3	29/37	IN 200	75/80	21
	3~		220/415	5.5/3.5			OUT 145*170		
MS-1503	3~	2.2	220/415	8/5	1.1/1.7	39/47	IN 200	75/80	24
							OUT 125		

MS Series

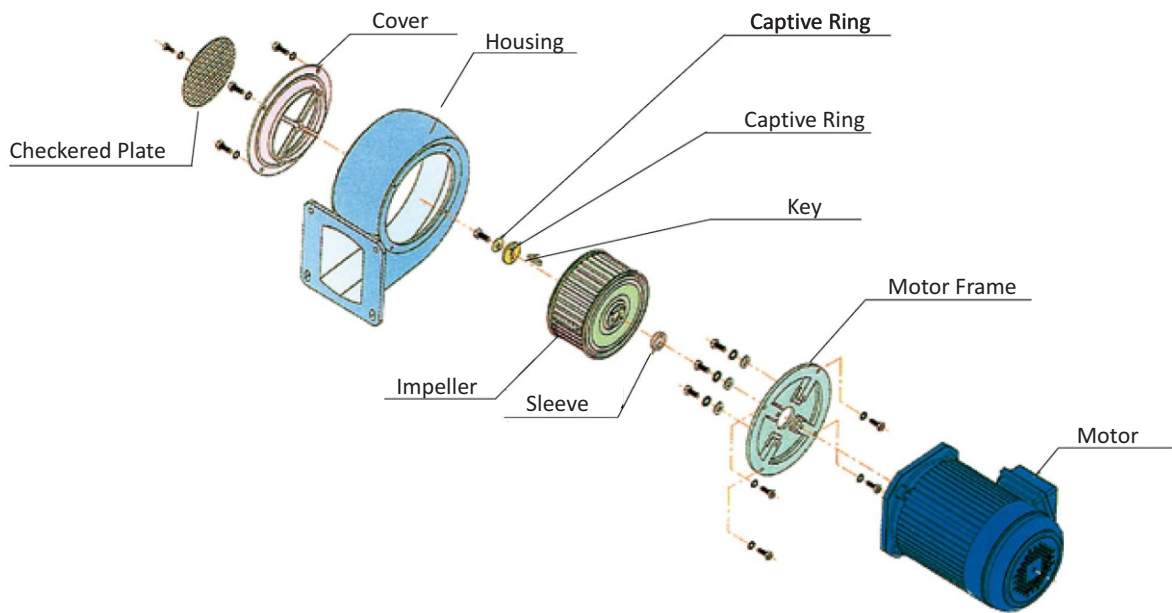
Everest Centrifugal Blower (Medium Pressure Blower)

EVEREST TURBO

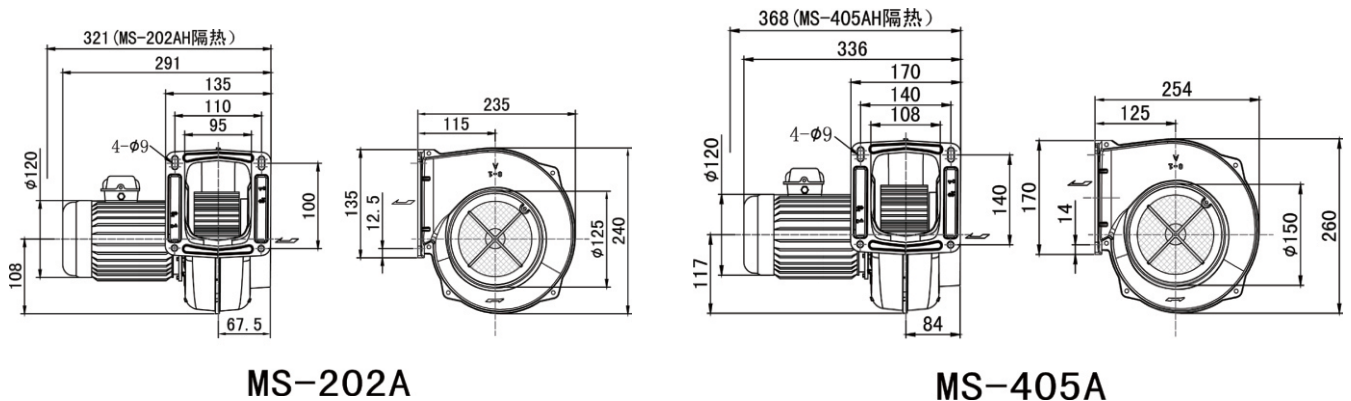
Performance curve



Chart



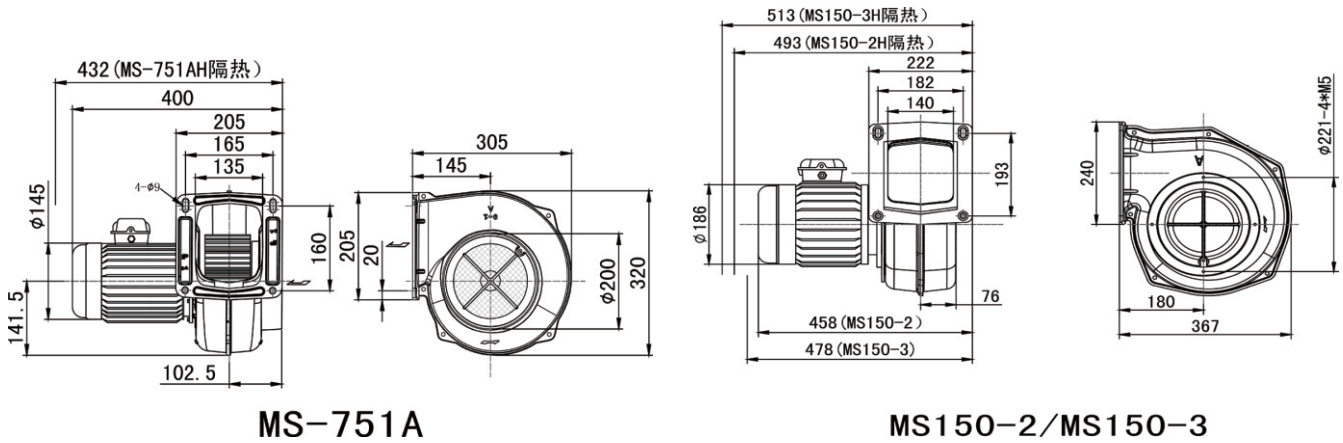
Dimensions



MS Series

Everest Centrifugal Blower (Medium Pressure Blower)

EVEREST TURBO



MS-751A

MS150-2/MS150-3

FMS Series

EVEREST TURBO

FMS-405

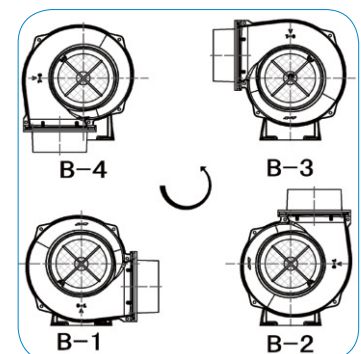
FMS-751

FMS-1503



Functional Features & Orientation

- Light Weight
- Big Volume
- Low Noise
- Low Pressure
- Continuous Duty Operation
- Long Service Life
- Aerodynamic Blade Design
- High Air Volume Control Stability
- ADC-12 High Strength Aluminum Alloy
- Multi Vane Impeller



FMS Series Housing can be rotated 360° & the outlet direction can be adjusted in 4 directions.

FMS Series

Everest Centrifugal Blower (Medium Pressure Blower)

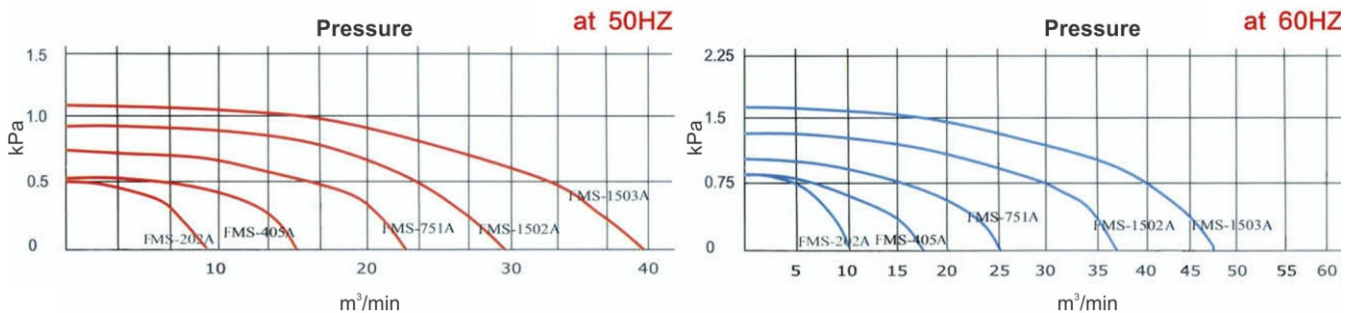
EVEREST TURBO

Specifications

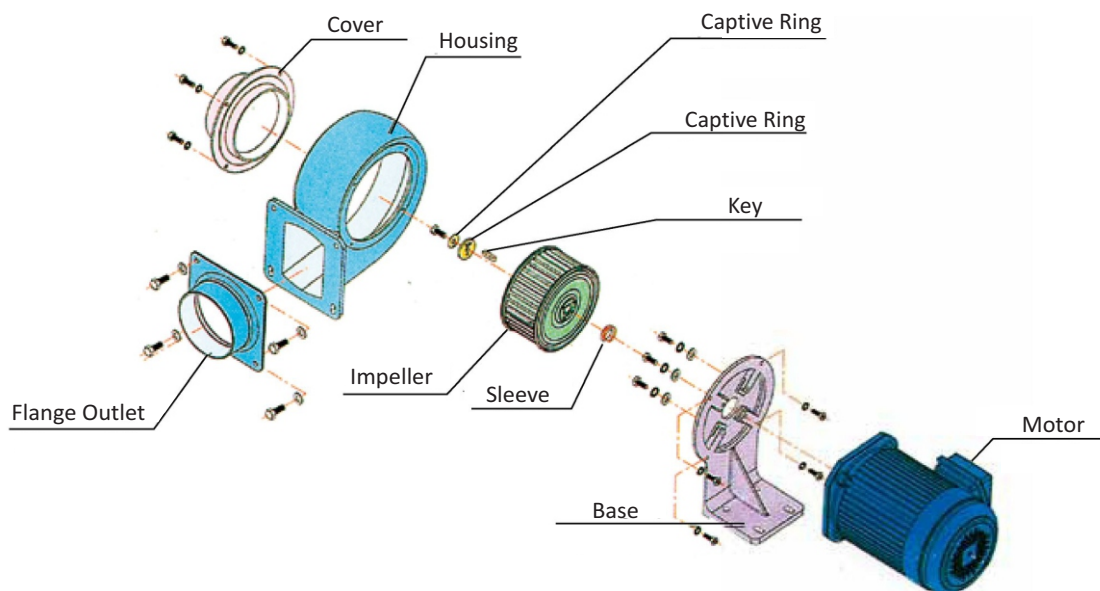
50/60HZ

Type	Phase	Power (KW)	Voltage (V)	Current (A)	Vacuum/Pressure (max) (Kpa)	Air Flow (max)(m3/min)	In/Out (mm)	Noise Level (dB)	Wt. (kg)
FMS-202	1~	0.2	220	1.5	0.5/0.8	8/10	IN 125	60/65	8
	3~		220/415	1.1/0.9			OUT 100		
FMS-405	1~	0.4	220	2.5	0.6/0.8	15/17	IN 150	65/70	9
	3~		220/415	1.9/1.2			OUT 125		
FMS-751	1~	0.75	220	5	0.7/1	23/25	IN 200	70/75	13
	3~		220/415	3/1.9			OUT 150		
FMS-1502	1~	1.5	220	9	0.9/1.3	29/37	IN 200	75/80	21
	3~		220/415	5.5/3.5			OUT 200		
FMS-1503	3~	2.2	220/415	8/5	1.1/1.7	39/47	IN 200 OUT 200	75/80	24

Performance curve



Dimensions



FMS Series

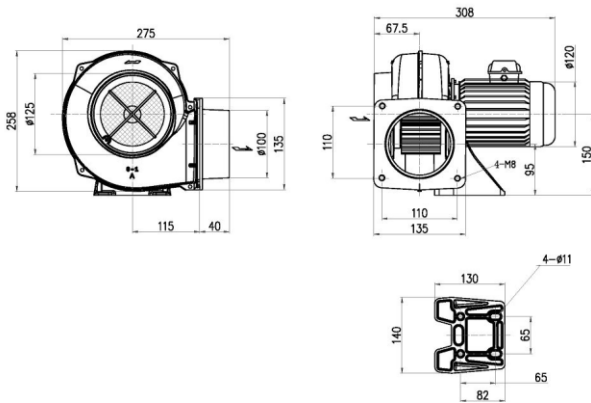
Everest Centrifugal Blower (Medium Pressure Blower)

EVEREST TURBO

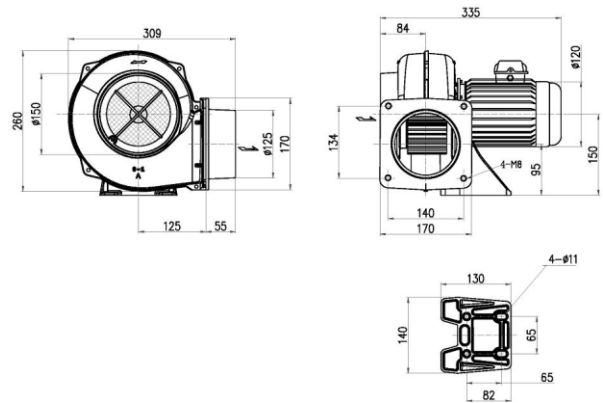
Specifications

50/60HZ

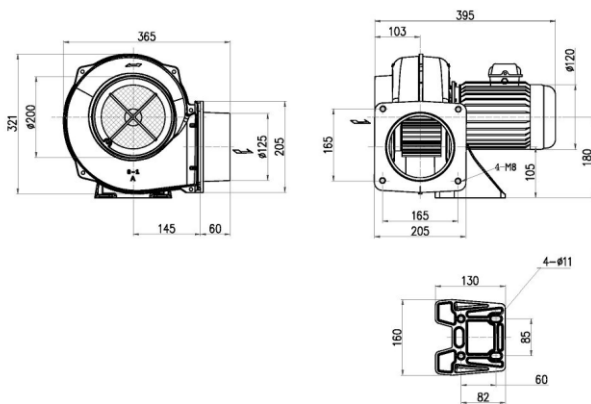
FMS202



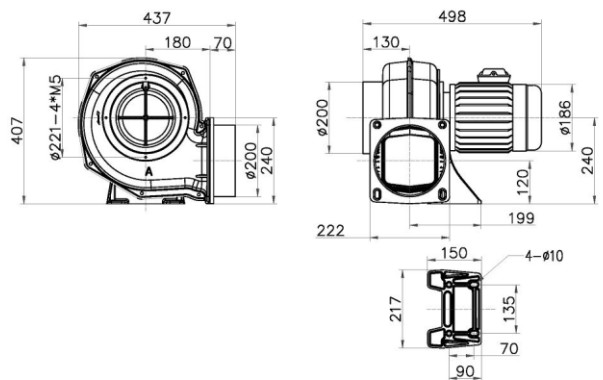
FMS405



FMS751



FMS1502



EVEREST CENTRIFUGAL BLOWER - FMS SERIES

PF Series

Everest Centrifugal Blower (Medium Pressure Blower)

EVEREST TURBO

HTB75



HTB102



HTB100-103

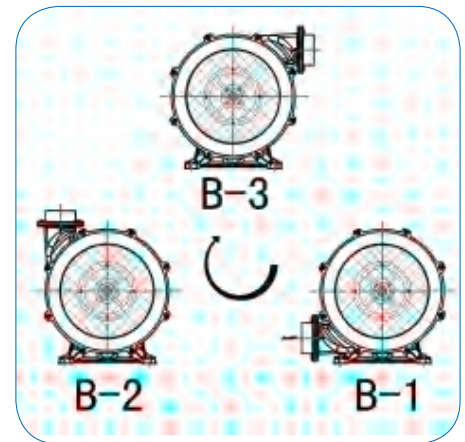


change

Functional Features

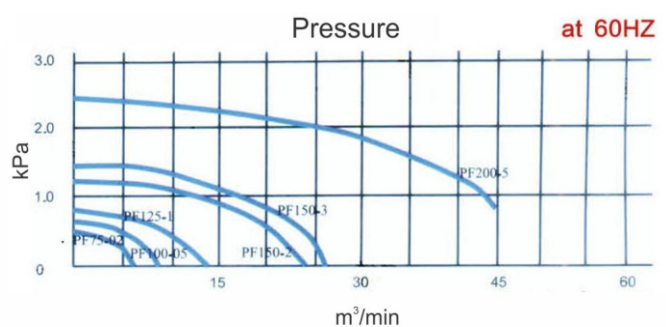
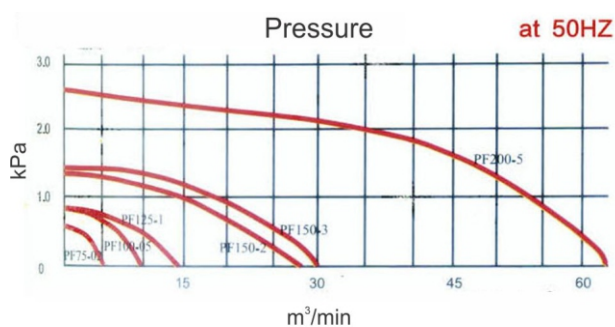
Orientation

- Light Weight
- Big Volume
- Low Noise
- Medium Pressure
- Continuous Duty Operation
- Long Service Life
- Aerodynamic Blade Design
- High Air Volume Control Stability
- ADC-12 High Strength Aluminum Alloy
- Double Plate & Clip Impeller



PF Series Housing can rotate 360° and the outlet can be adjusted in 4 directions. Motor for PF125-1, PF150-2, PF150-3 & PF200-5 can be mounted on left or right.

Performance Curve



PF Series

Everest Centrifugal Blower (Medium Pressure Blower)

EVEREST TURBO

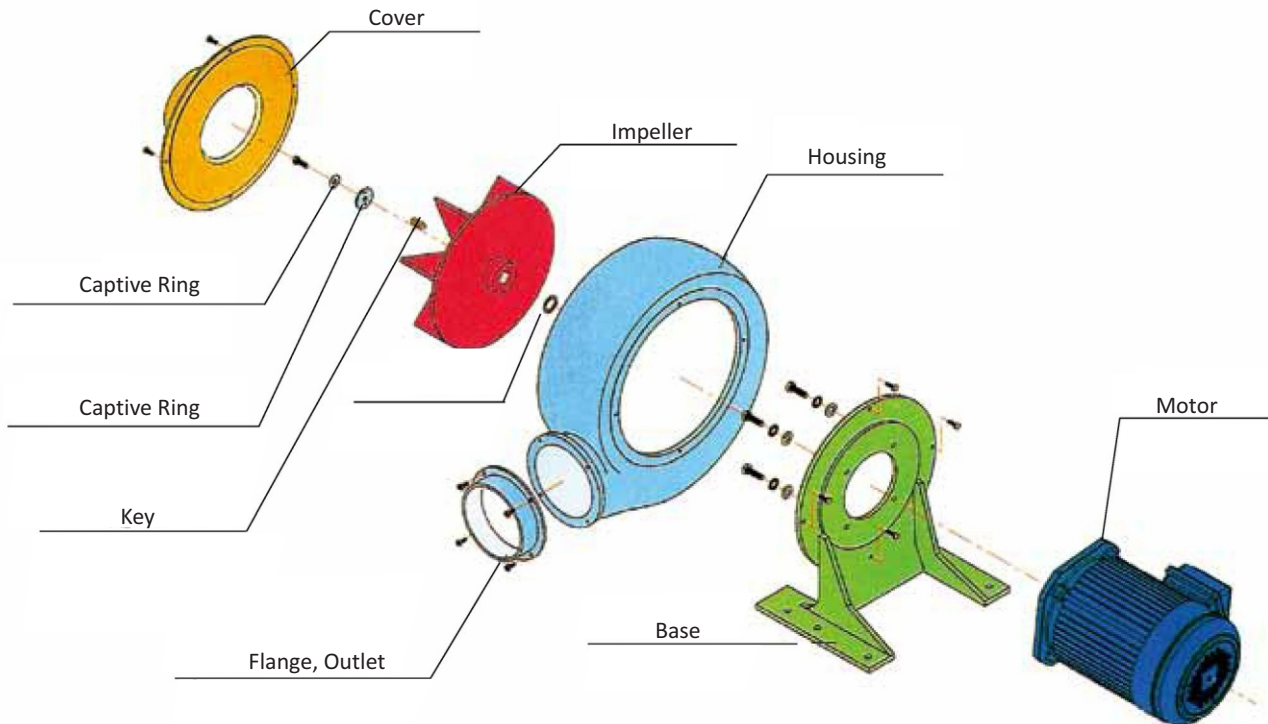
Specifications

50/60HZ

Type	Phase	Power (KW)	Voltage (V)	Current (A)	Vacuum/Pressure (max) (Kpa)	Air Flow (max)(m3/min)	In/Out (mm)	Noise Level (dB)	Wt. (kg)
PF75-02	1~	0.2	220	1.5	0.5/0.7	5/6	IN 100	50/62	10
	3~		220/415	1.1/0.9			OUT 100		
PF100-05	1~	0.4	220	2.5	1/1.2	8/10	IN 100	56/70	13
	3~		220/415	1.9/1.2			OUT 100		
PF125-1	1~	0.75	220	5	1.1/1.4	14/17	IN 125	65/80	17
	3~		220/415	3/1.9			OUT 125		
PF150-2	1~	1.5	220	9	1.3/1.9	28/33	IN 150	75/90	30
	3~		220/415	5.5/3.5			OUT 150		
PF150-3	3~	2.2	220/415	8/5	1.6/2.5	33/37	IN 252 OUT 125	75/93	33
PF200-5	3~	3.7	220/415	13/7.5	2.6/3.8	63/71	IN 200 OUT 200	80/100	49

Chart

50/60HZ

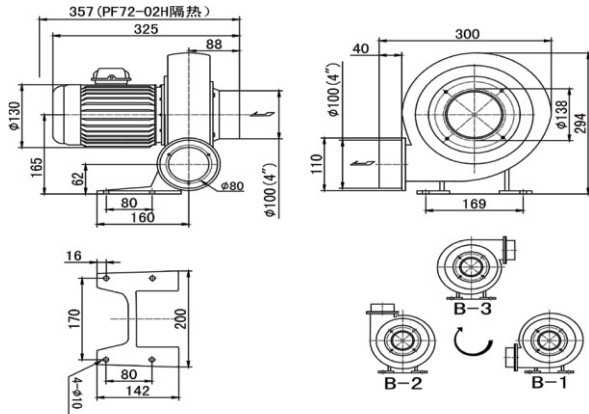


PF Series

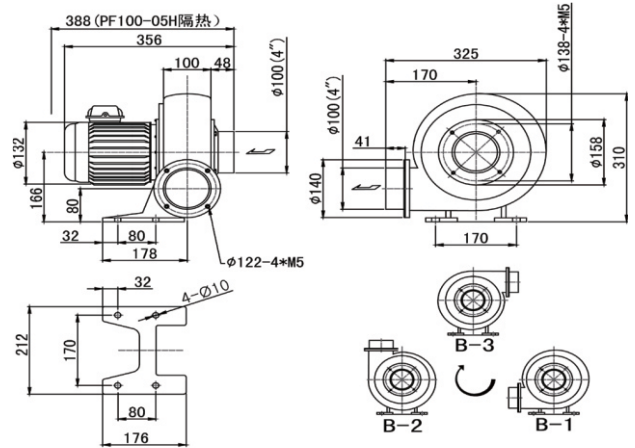
Everest Centrifugal Blower (Medium Pressure Blower)

EVEREST TURBO

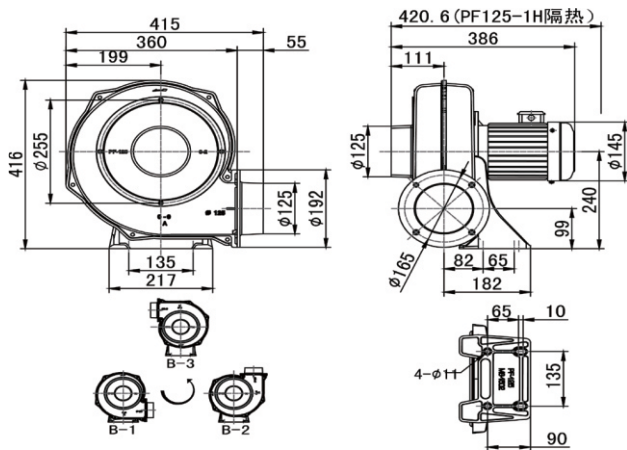
PF75-02



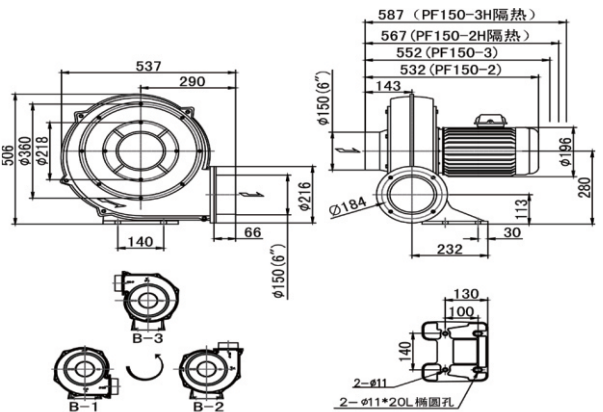
PF100-05



PF125-1



PF150-2



APPLICATION

Everest Centrifugal Blower

EVEREST TURBO

- Printing Machines
- Environmental Machinery
- Drying Machines
- Burning Machines
- Hot Air Generators
- Incinerator
- Plastic Extrudes
- Laminating, Film Making Machines
- Textile Machines
- Pollution Machines
- Machinery For Cooling
- Powder Granule Transport
- Uniform Temperature Equipment
- Dust Connector
- Wood working machinery
- General Ventilators
- Machinery For Food & Beverage
- Grain Elevators

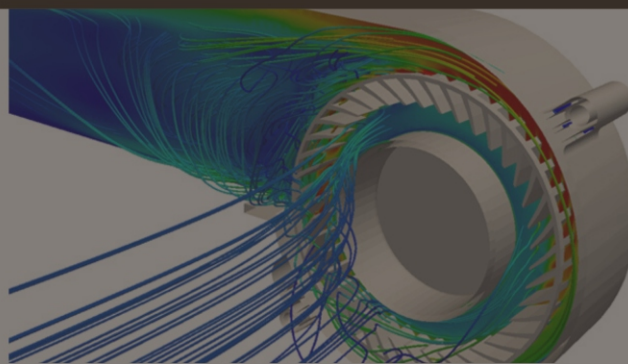


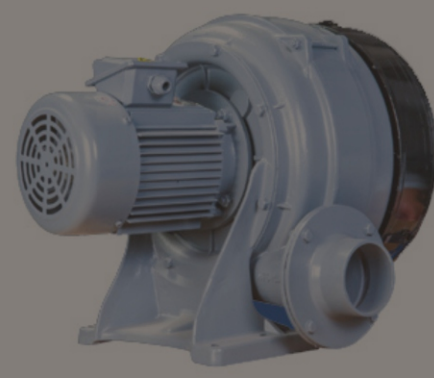


**EVEREST TURBO, a division Of EVEREST BLOWERS Pvt. Ltd. proudly presents
EVEREST ALUMINIUM DIECAST CENTRIFUGAL BLOWER Technology:**

The Salient Features Of EVEREST TURBO Centrifugal Blowers are:

- Made from Die Cast Aluminium (ADC-12): High strength Aluminium alloy for light weight, high volumes of clean, oil free, dry air at low pressure and vacuum.
- For the same power, the air flow is 10 times higher than Side Channel Blowers, however, pressures are limited.
- Adjustable outlets & motor position.
- Available in single/three phase configurations.
- Have the added benefits of low noise operation.
- Virtually maintenance free.
- Extremely robust, corrosion resistant and are suitable for the most demanding applications.
- Designed for continual use up to a maximum ambient temp of 45°C to 50°C.
- Equipped with a low-noise, high-efficiency, class F insulated IE2/IE3 induction Motors.
- No - oil operation, No vibration.
- 100% Oil Free and Dry quality Air, safe for critical applications.
- Established characteristics are based on actual tests instead of calculations, hence more accurate. This can help you determine the performance of your system/application in advance.
- Zero maintenance cost: Our blowers do not use gearboxes and oil lubricants used by conventional blowers, minimizing maintenance requirements, lowering user maintenance costs and improving overall system stability. In addition, by adopting air-cooled cooling in the entire model, there is no need for a cooling water circulation system and associated maintenance cost.
- Direct Driven Blowers, eliminating gears or transmission boxes, hence maximize energy efficiency.
- Everest Turbo Centrifugal Blowers are suitable for vertical and horizontal operation.
- Can be customized for High Temperature Operation (Up to 200°C), Variable Inlet & Outlet Sizes, & Special Voltage Operation.
- Full ATEX range.





CENTRIFUGAL BLOWERS

PRINTING
 FAST DRYING
 GRANULAR IMPURITIES
 UV PRINTING & DRYING
 FILM BLOWING MACHINE
 BAG FILLING MACHINE
 ULTRASONIC CLEANING
 PRINTING MACHINE
 MECHANICAL COOLING
 CONVEYING POWDER
 SMALL GAS
 COMBUSTION ENGINE
 HEAT & COLD DRYING
 ELECTROPLATING
 HOT BLAST AIR
 FILM BLOWING MACHINE
 AIR DRYING SYSTEMS
 AIR SUPPLY FOR FOOD MACHINERY
 VACUUM SUCTION EQUIPMENT
 POWDER GRANULE TRANSPORT
 PLASTIC RAW MATERIAL DRYING
 NATURAL GAS COMBUSTION ENGINE
 HOT & COLD GAS PUMPING
 COMBUSTION INCUBATOR
 BROILER
 PRINTING
 PAPER PACKAGING MACHINERY
 GENERAL AIR SUPPLY
 FAST DRYING
 DRAINAGE
 RAPID COOLING
 CREMATION MACHINE
 WOOD WORKING MACHINE



APPLICATIONS: BLOWING OFF, SUCTION, HEATING, AERATION & VENTILATION, CONVEYING, COOLING, DRYING, INCINERATORS, GENERATE NEGATIVE PRESSURE

INDUSTRIES WE SERVE:

- PLASTICS INDUSTRY
- WATER TECHNOLOGY
- FILLING & PACKAGING TECHNOLOGY
- AUTOMOTIVE INDUSTRY
- PRINTING INDUSTRY
- FILTER TECHNOLOGY
- FOODSTUFF / LUXURY FOOD TECHNOLOGY
- CLEANING & SURFACE TECHNOLOGY
- RAIL TECHNOLOGY
- DRYING TECHNOLOGY
- ENVIRONMENTAL TECHNOLOGY
- PHARMACEUTICAL INDUSTRY
- AND MANY MORE.....

Blower Type	CX	TB	HTB	MS	FMS	PF
Volume Flow Rate (m ³ /min) (50 Hz)	4.5 - 46	18 - 90	6 - 13	8 - 39	8 - 39	5 - 63
Volume Flow Rate (m ³ /min) (60 Hz)	5.3 - 53	22 - 100	7 - 15	10 - 47	10 - 47	6 - 71
Pressure (kPa)	1.1 - 4.4	2.1 - 7	2.6 - 26	0.8 - 1.7	0.8 - 1.7	0.7 - 3.8
Vacuum (kPa)	0.7 - 3.2	1.3 - 5	2.1 - 18	0.5 - 1.1	0.5 - 1.1	0.5 - 2.6
Impeller Type	Semi-Open Impeller	Double Plate & Clip Impeller	Double Plate & Clip Impeller	Multi Vane Impeller	Multi Vane Impeller	Straight Blade Impeller



Why Choose Everest Turbo?

Since EVEREST was established, the company has been a world leader in the design & manufacture of Air Blowers. EVEREST offers a genuine alternative in high-performance air technology equipment.

Market Leadership

Over 40 years of industry innovation and market leadership in Pressure & Vacuum Systems.

Design And Manufacture

Everest products are designed and assembled in India to ISO 9001 Quality Standards.

Customized Solutions

Trusted engineering expertise in the design of solutions tailored to meet specific application needs while maximizing energy efficiencies and lowering operating costs.

Reliability

To ensure superior quality, our products are built strong and require low maintenance.

Testing

Everest Turbo Products are carefully tested before they leave the factory.

Product Delivery

Everest is committed to supply products promptly & reliably.

Superior Performance

Systems are designed and engineered to perform to customer specifications, resulting in improved product quality, superior drying, blow off and air rinsing.

Technical Support and Service

Our aim is complete customer satisfaction with fast responses and expert, local advice.

Large Installed Base

A comprehensive list of customers from various industries.

CONTACT US

EVEREST BLOWERS PRIVATE LIMITED

Corporate Office

B-44, Mayapuri Industrial Area, Phase 1, New Delhi 110064, India
T: +91 11 45457777 F: +91 11 45457718

Factory

Plot No. 82-83, Sector 16, HSIIDC Industrial Area, Bahadurgarh 124507, Haryana, India
T: +91 1276 241281, 241282

Sales

+91 8053047777, 8053067777 | cmo@everestblowers.com | www.everestturbo.com

Follow us



ISO 9001:2015 | ISO14001:2015 | OHSAS 18001:2007 Certified

