

DRY VANE PUMPS

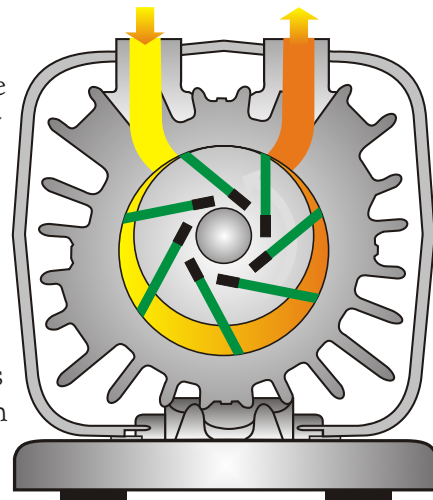


EVEREST DRY VANE PUMPS

Everest, leaders in blower engineering, have introduced 100% Oil Free, Dry Vane Pumps to cater to the industrial demand of a compact, quiet, sturdy & reliable pump suitable for delivering small volumes of 100% oil free air at moderate pressures essentially required for food, medicine, printing, electroplating, agitation, small STP & ETP Plants and other similar applications.

**100%
Oil Free**

These pumps are precision machines with simple construction & highly efficient in operation. They require practically zero maintenance and are rated for continuous duty operation.

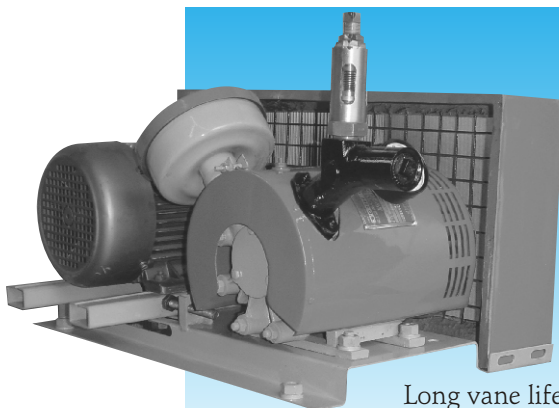


They fall in the category of positive displacement machines and are capable of delivering relatively constant discharge at varying discharge pressures to meet the process requirements. No internal valves or setting are required making them simple in operation and maintenance.

They are silent in operation and require no internal lubrication. The vanes are made of prime quality impregnated graphite with wear compensation mechanism to ensure high efficiency during their entire life. Multi vane design reduces pulsations giving less pulsating flow eliminating the need of additional accessories.

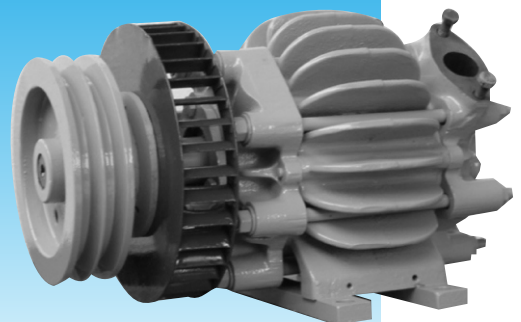
Compact package units are available with essential accessories such as Pump Motor Base Frame, Guards, Drive, Suction Filter, Relief Valve & Pressure Gauge.

Our technology is so flexible, we can custom manufacture "Special Air Blowers" by alloying and cross linking diverse designs to suit individual requirements and import substitutes.



SALIENT FEATURES

- 100% Oil Free Air
- Wide range of pressures
- Quiet Operation
- Compact Design
- Durable for long life
- Low maintenance



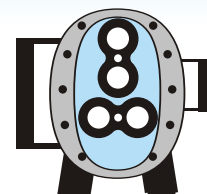
Long vane life designed for continuous duty operation

Supported by Everest Expertise

**WE JUST DON'T
OFFER BLOWERS,
WE OFFER
SOLUTIONS!**

PRODUCT RANGE

Air Blowers~Water Cooled Blowers~Gas Blowers~Vacuum Booster Pumps~Acoustic Hoods & Enclosures~Dry Vane Pumps



EVEREST BLOWERS

PERFORMANCE TABLE

DRY VANE PUMPS

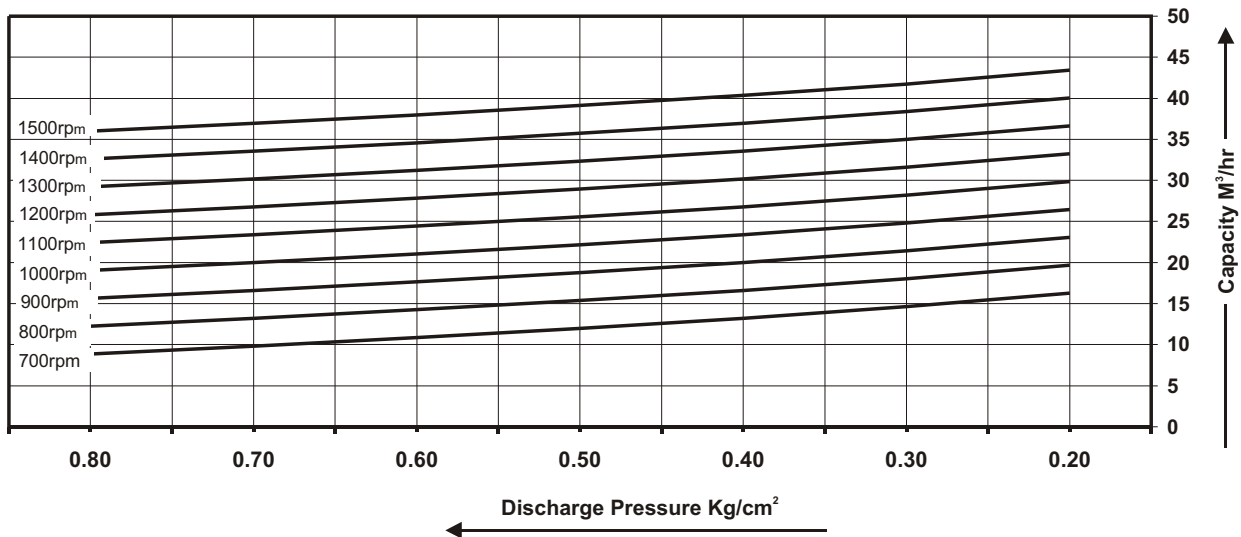
DISCHARGE PRESSURE Kg/cm²

Pump Speed	0.2 Kg/cm ²		0.3 Kg/cm ²		0.4 Kg/cm ²		0.5 Kg/cm ²		0.6 Kg/cm ²		0.7 Kg/cm ²		0.8 Kg/cm ²	
	M ³ /hr	BHP	M ³ /hr	BHP	M ³ /hr	BHP	M ³ /hr	BHP	M ³ /hr	BHP	M ³ /hr	BHP	M ³ /hr	BHP
700	16	0.6	15	0.7	13	0.8	12	0.9	11	1.0	10	1.1	9	1.2
800	20	0.7	18	0.8	17	0.9	15	1.0	14	1.1	13	1.3	12	1.4
900	23	0.8	21	0.9	20	1.0	19	1.1	18	1.2	17	1.4	16	1.5
1000	26	0.9	25	1.0	23	1.1	22	1.2	21	1.3	20	1.6	19	1.7
1100	30	0.9	28	1.1	27	1.2	26	1.3	24	1.5	23	1.7	22	1.9
1200	33	1.0	32	1.2	30	1.3	29	1.5	28	1.6	27	1.9	26	2.0
1300	37	1.1	35	1.3	34	1.4	32	1.6	31	1.8	30	2.0	29	2.2
1400	40	1.2	38	1.4	37	1.5	36	1.7	35	1.9	34	2.2	33	2.4
1500	43	1.3	42	1.5	40	1.6	39	1.8	38	2.0	37	2.4	36	2.5

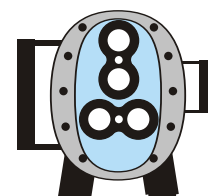
Recommended Suction & Discharge line: 25mm NB

Performance Curve

Capacity at Different Speeds and Pressure



Note: Capacity is FAD at prevailing inlet conditions



EVEREST BLOWERS

B-44, Mayapuri Industrial Area, Phase-I, New Delhi 110 064, India

Telefax: 91-11-28116307, 28114944, 28114955, 28117469 Email: info@everestblowers.com Web: www.everestblowers.com